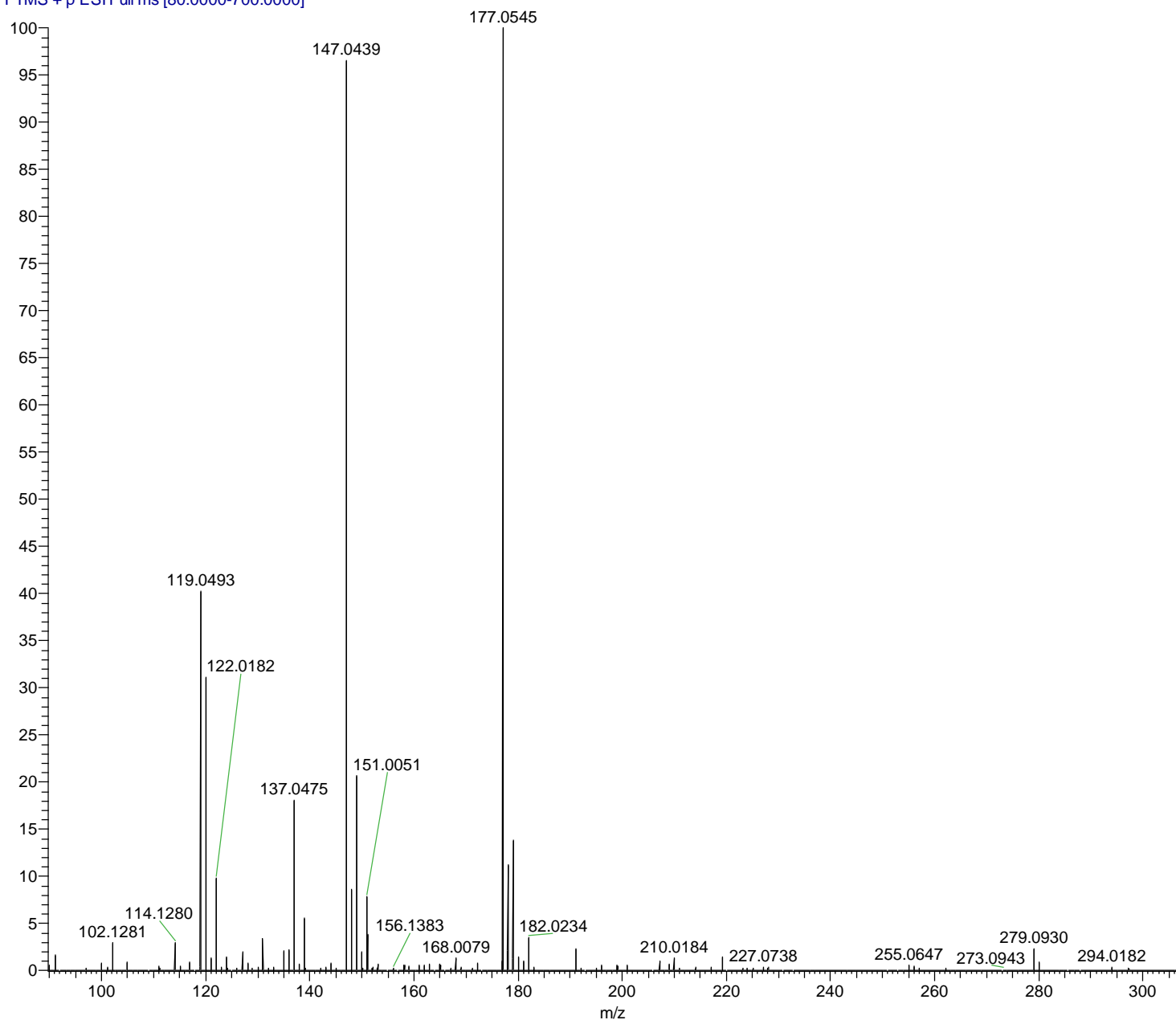


131023_ols2 151_p #59 RT: 0.14 AV: 1 NL: 4.25E8
T: FTMS + p ESI Full ms [80.0000-700.0000]



THEORETICAL MASS FOR $[\text{C}_{10}\text{H}_9\text{O}_3]^+ = 177.0546$

FOUND MASS: 177.0545

ERROR (ppm): -0.56